

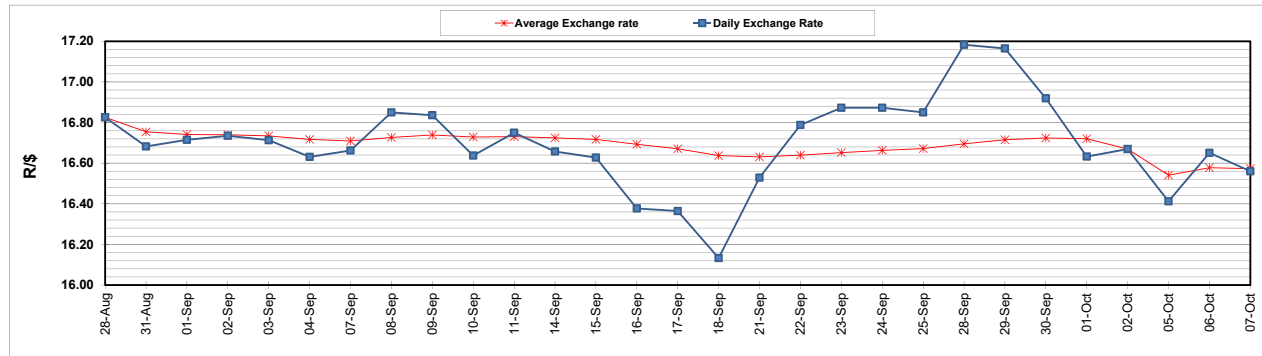
	PETROL 95 ULP	PETROL 93 ULP & LRP	DIESEL 0.05%	DIESEL 0.005%	ILL. PAR.
GAUTENG PUMP PRICE (SA c/l) AS FROM 07/10/2020	1,486.000	1,466.000	-	-	-
WHOLESALE PRICE (SA c/l) AS FROM 07/10/2020	-	-	1,237.560	1,238.960	640.828
SINGLE NATIONAL MAXIMUM RETAIL PRICE	-	-	-	-	798.000
BASIC FUEL PRICE - 07/10/2020 (SA c/l)	532.267	521.402	498.929	500.298	467.626
PRESS RELEASE CONTRIBUTION TO BFP 07/10/2020 - 07/10/2020 (SA c/l)	533.470	523.470	486.630	488.030	436.128
UNIT OVER/(UNDER) RECOVERY - 07/10/2020 (SA c/l)	1.203	2.068	(12.299)	(12.268)	(31.498)
AVERAGE BASIC FUEL PRICE 02/10/2020 - 07/10/2020	527.737	516.858	487.208	488.724	458.619
AVERAGE UNIT OVER/(UNDER) RECOVERY 02/10/2020 - 07/10/2020	29.733	23.862	66.922	69.056	34.509

ANALYSIS MOVEMENT OF AVERAGE OVER/(UNDER) RECOVERY

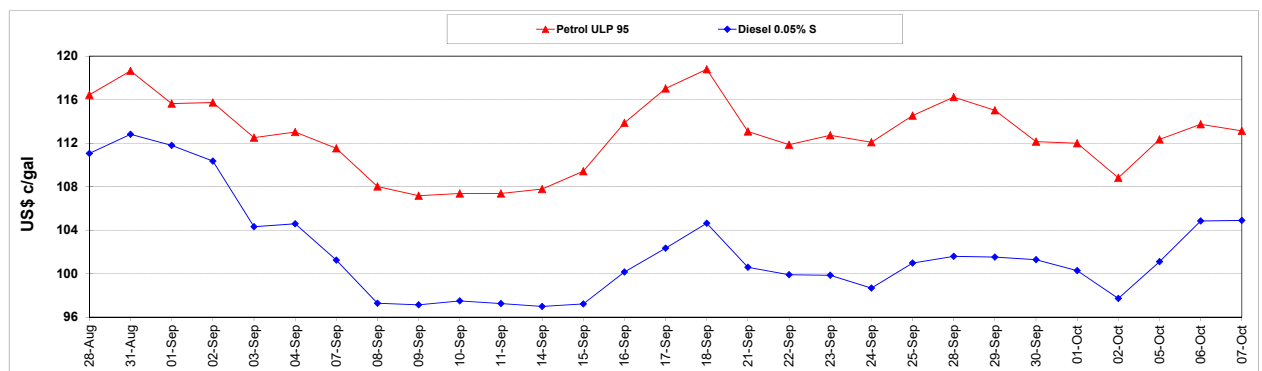
	PETROL 95	PETROL 93	DIESEL 0.05%	DIESEL 0.005%	ILL. PAR.
- MOVEMENT IN INTERNATIONAL PRODUCT PRICES	25.046	19.271	62.595	64.715	30.436
- MOVEMENT IN EXCHANGE RATE	4.687	4.591	4.327	4.341	4.073
AVERAGE UNIT OVER/(UNDER) RECOVERY 02/10/2020 - 07/10/2020	29.733	23.862	66.922	69.056	34.509

R/\$ EXCHANGE RATE - (R/\$16.5600 - 07/10/2020)

EXCHANGE RATE USED IN BASIC FUEL PRICE



INTERNATIONAL PRODUCT PRICES OF BASKET USED IN BASIC FUEL PRICE



BASIC FUEL PRICE IN SA CENTS PER LITRE

